

KINZEBILT

"Not the Ordinary"



QUALITY OUTDOOR PLAYSETS

WHY BUY A “KINZEBILT” SWING



1. Children love to climb, slide, swing, crawl through or over things, shout and pretend they are grownup. Children can pretend to fly a helicopter, drive a dump truck, or dig with a bulldozer. Our playsets help them with imagination, exercise, and just getting some fresh air.
2. With our unique playsets that can be fully customized, we create “not the ordinary.”
3. We only use #1 or better pressure-treated southern yellow pine, milled on all 4 sides, with rounded corners, (to reduce the chance of splinters) and for a nice smooth finish.
4. We believe the strength of the structure starts with the part you hardly see and don't think about. Our first level floors have 16" on center (or less), ground contact treated 2x4 joists to create a solid foundation for the structure.
5. We use stainless steel or powder coated bolts, washers, nuts, lag bolts, swing beam plates, and swing hangers for a longer lasting product, and to eliminate rust spots.
6. We have a large selection of stain colors to choose from. We use a solid color stain that has a 15 year siding and 5 year deck warranty.
7. With a little care and maintenance, these structures should last between 15 to 20 years.
8. All our structures are guaranteed for 5 years against defects in manufacturing and workmanship. Acts of nature, normal wear and tear, failure to properly maintain, damage from misuse and natural checking of the wood are not covered.

PRINCESS PALACE

#2100

Open Area Needed: 25'w x 14'l x 11'h



Features:

- Palace 8'w x 6'l x 11'h
- 1-3 Position Swing Beam
- 2 Belt Swings
- Double Glider
- 1-10 Wave Slide
- 1 Bubble Panel
- 1-Draw Bridge
- 4 Flags
- 52 Square Feet of Deck Space

LANCELOT CASTLE

#2200

Open Area Needed: 32'w x 14'd x 11'h

Shown with Taos Taupe and Mansfield Tan Trim



Features:

- Castle 12'w x 8'd x 11'h
- 130 Square Feet of Play Deck
- 4 turrets
- 2 Ladders to Top Deck
- 3 Position Swing Beam
- 2 Belt Swings
- Double Glider
- 7' Spiral Slide
- 10' Wave Slide



PIRATE SHIP POLY

#3300

Open Area Recommended:
18'd x 16'w x 9'h

Features:

- Features: Pirate Ship
5'w x 11'l x 8'h
- Captain's Wheel
- Customizations: Different
Color Slides and Poly

Poly Colors: White, Patriot Blue



PIRATE SHIP

#3300

Open Area Recommended: 18'd x 16'w x 9'h



Features:

- Pirate Ship 5'w x 11'l x 8'h
- Captain's Wheel
- Customizations: Different Color Slides and Stains

Stain Colors: Burnt Hickory, Yellow, Red



PIRATE SHIP

#5000

Open Area Recommended: 20'd x 33'w x 14'h



Features:

- Pirate Ship 15'l X 8'w X 14'h
- 112 Square Feet of Play Deck
- Top Deck Approx.: 6' X 7'
- Back, Ground Level Deck Approx.. 3 ½' X 6'
- Mid Deck Approx.: 7' X 8' (At the Longest Point)
- 10' Wave Slide
- 6' Avalanche Slide
- Mast
- Captain's Wheel
- Fake Cannons on The Side
- Customizations: Slides, Different Color Stains

Stain: Mission Brown, Pewter Gray, Black, Red



PIRATE SHIP

#5200

Open Area Recommended: 32'd x 34'w x 17' 6"h



Features:

- Pirate Ship 21'l x 8 ½'w x 17' 6"h with Mast, 10' without Mast
- 204 Square Feet of Play Deck
- 1-7'Spiral Slide
- 1-10' Wave Slide
- 3 Position Swing Beam
- 2 Belts
- 1 Trapeze Swing
- Cannons
- Open Floor Plan
- Captain's Wheel
- Mast

Stain: Taos Taupe, Pewter Gray
Trim, Black



PIRATE SHIP

#D119

Open Area Recommended: 18'd x 33'w x 16'h



Features:

- Pirate Ship 8 ½'w x 23'l x 16'h
- 150' Square Feet of Floor Space
- 7', 4', and 30" High Decks
- Ships Wheel, Rope, Mast, Anchor, Cannons
- 7' Turbo Slide
- 10' Wave Slide
- Customizations: Different Slides, Swing Beam and Swings

Stain: D119 Pirate Ship Colors



SCHOOL BUS

#600



- 10' School Bus with 7 Seats
- Multi Color Stain
 - 40 Square Feet of Play Deck

Features:

- Steering Wheel
- Stop Sign
- Seats

SCHOOL BUS

#700



- 12' School Bus with 9 Seats
- No Stain
 - 48 Square Feet of Play Deck

Features:

- Steering Wheel
- Stop Sign
- Seats

SCHOOL BUS

#800



- 14' School Bus with 11 Seats
- 56 Square Feet of Play Deck

Features:

- Steering Wheel
- Stop Sign
- Seats

LADDER FIRE TRUCK

#1500

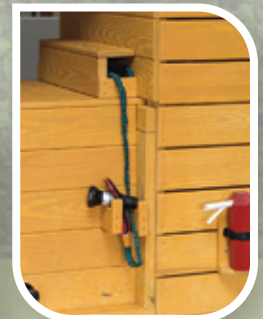
Open Area Needed: 18'w x 26'l x 10'h

Features:

- Fire Truck 18'w x 4'l x 10'h
- 99 Square Feet of Play Deck
- Aerial and Platform 6' Deck Height
- Entry Ladder on Rear
- 10' Wave Slide
- Bell
- Optional Water Feature
- Fire Hats
- Steering Wheel
- 4 Seats in Cab
- Rock Wall
- 4 Position Swing Beam
- 2 Belt Swings
- Double Glider
- Trapeze Bar
- Shown with Multi Color Stain



Shown with optional water feature



LADDER FIRE TRUCK POLY

#1500

Open Area Recommended: 16'd x 34'w x 12'h

Features:

- Fire Truck 4'w x 18'l x 10'h
- 99' Square Feet of Floor Space
- Aerial Platform 6' High
- Entry Ladder on Rear
- 7' Turbo Slide
- 10' Wave Slide
- Bell
- Fire Extinguishers
- 4 Seats In Cab
- 2 Steering Wheels
- Customizations: Different Slides, Swing Beam and Swings

Poly Colors: Bright Red, Dove Gray, Black



FIRE TRUCK

#400

Open Area Recommended: 10'd x 17'w x 6'h



Features:

- Fire Truck 4'w x 11'l x 6'h
- Steering Wheel
- Bell
- Fire Extinguishers
- Customizations: Slides, Different Color Stains
- Shown with 6' Avalanche Slide

Stain: Fire Engine Red, Gray, Black



LADDER FIRE TRUCK

#500

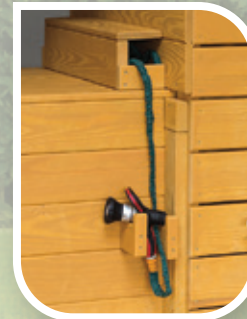
Open Area Needed: 27'w x 15'l x 8'h



Shown with Multi Color Stain

Features:

- Fire Truck 4'w x 12'l x 6'h
- 40 Square Feet. Play Deck
- 3 Position Swing Beam
- Double Glider
- 2 Belt Swings
- Entry Ladder
- 10' Wave Slide
- Bell
- Fire Extinguishers
- Steering Wheel
- 4 Seats
- Fire Hats
- Water Feature Available
- 8' High Swing Beam
- Shown with Multi Color Stain



FIRE TRUCK POLY

#3000

Open Area Recommended: 7'd x 20'w x 6'h



Features:

- Fire Truck 4'w x 8'l x 6'h
- Steering Wheels
- Bell
- Customizations: Different Color Slides

Poly Colors: Bright Red, Black



BULLDOZER

#1200

Open Area Needed: 27'w x 25'l x 10'h

Features:

- Bulldozer 6'w x 18'l x 10'h
- 52 Square Feet of Play Deck
- Ground Level Deck
- 5' High Deck
- Tire Swing
- Turbo Tube Slide
- 10' Wave Slide
- Seat with Control Levers
- 3 Position Swing Beam
- Double Glider
- 2 Belt Swings
- Entry Ladders
- Smoke Stack
- Shown with Multi Color Stain

Windshield
screen included



Optional 14' Wave Slide

BULLDOZER

#1250

Open Area Needed: 20'w x 17 x 9'h



Features:

- Bull Dozer 50" w x 13' l x 9' h
- 1-3 Position Swing Beam
- 2 Belt Swings
- Double Glider
- 1-10 Wave Slide
- 1 Seat with Joysticks
- 27 Square Feet of Deck Space



BULLDOZER POLY

#3200

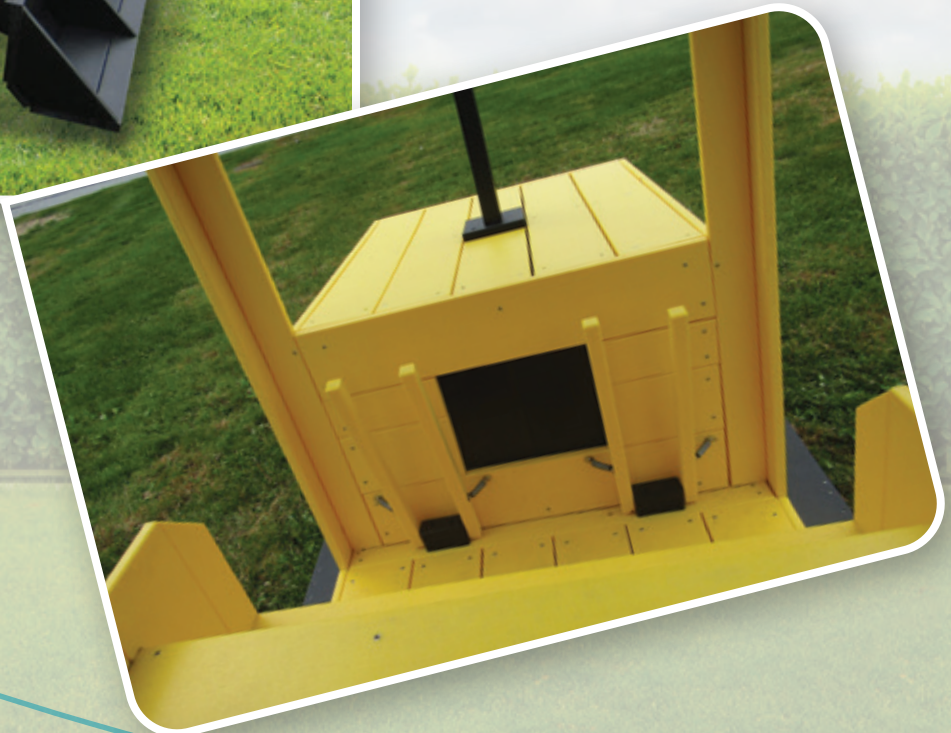
Open Area Recommended: 10'd x 20'w x 6'h



Features:

- Bulldozer 4'w x 8'l x 6'h
- Joy Sticks
- Customizations: Different Color Slides

Poly Colors: Marker Yellow, Black



DUMP TRUCK POLY

#3100

Open Area Recommended: 10'd x 20'w x 8'h



Features:

- Dump Truck 4'w x 8'l x 5'h
- Steering Wheels
- Customizations: Different Color Slides

Poly Colors: Marker Yellow, Black



DUMP TRUCK

#1700

Open Area Needed: 21'w x 26'l x 12'h



Features:

Truck 18'l x 6'w x 12'h

144 Square Feet of play-deck
(Includes ground level)

Includes:

- Ground Level Deck
- 4', 5', 7' High Decks
- Air Horns
- Mirrors
- Smoke Stacks
- Gas Tanks
- 4 Entry Ladders
- Headlights
- Air Intakes
- 2 Belt Swings
- 1 Double Glider
- 3 Position Swing Beam
- 10' Wave Slide
- 14' Sidewinder Slide
- 2 Steering Wheels
- Yellow and Stonehedge Gray Stain, and Black Stain



DUMP TRUCK

#1750

Open Area Needed: 25'w x 15'l x 9'h



Features:

- Truck 50" w x 14' l x 8' h
- 1-3 Position Swing Beam
- 2 Belt Swings
- Double Glider
- 1-10 Wave Slide
- 2 Seats
- 2 Steering Wheels
- 54 Square Feet of Deck Space



BIG COMBINE

#1900

Open Area Recommended: 23'd x 32'w x 13'h



Features:

- Combine 8' 2"W x 18'l x 10' 3"h (14'w with Head)
- 134 Square Feet of Play Deck
- 1-7' Deck, 1-5' Deck, Cab Deck 5'
- 2-10' Wave Slide
- 1-7' Spiral Slide
- 14' Crawl Tunnel
- 1 Steering Wheel
- 1 Seat
- 1 Control Panel
- Mirrors
- Customizations: Different Slides, Different Color Stains, Swing Beam and Swings

Stain: Red, Black



SMALL TRACTOR

#1850

Open Area Needed: 24'w x 15'l x 9'h



Features:

- Tractor 50" w x 14' l x 105" h
- 1-3 Position Swing Beam
- 2 Belt Swings
- Double Glider
- 1-10 Wave Slide
- 1 Seat
- 1 Steering Wheel
- 22 Square Feet of Deck Space



BIG TRACTOR

#1800

Open Area Recommended: 30'd x 38'w x 11'h



Features:

- Tractor with Scoop 7'W x 18'l x 10'h
- 54 Square Feet of Play Deck
- 10' Wave Slide
- 7' Turbo Slide
- 4 Position Swing Beam (16')
- 3 Belts
- 1 Double Glider
- 1 Tire Swing

Customizations: Slides, Different Color Stains
Stain: Yellow, Green, Black



BIG TRAIN

#2600

Open Area Recommended: 25'd x 33'w x 11'h



Back End



shown in fire engine red, black, gold accents

Features:

- Train Engine 6'w x 13 ½'l x 10 ½'h
- 102 Square Feet of Play Deck
- Bell
- 10' Wave Slide
- 5' Turbo Slide
- 3 Position Swing Beam
- 2 Belts
- 1 Double Glider
- Customizations: Slides, Different Color Stains

Stain: Maroon, Black, Gold Accents



4-PIECE TRAIN W/ MULTI COLORED STAIN

#900

Open Area Needed:

Straight Layout - 4'w x 30'l x 6'h

Curved Layout - 29'w x 11'd, Open Area Needed: 35'w x 17'd



Features:

Each piece is about 7'4" l x 46" w x 5'6" h

- Tracks
- Bell
- Steering Wheel
- Bench Seats Inside
Engine, Coal Car, and Caboose
- Shown with Multicolor Stain



POLY

#910

Features:

Each Piece is About 7'l x 46" w x 5'6" h

- Tracks
- Bell
- Steering Wheel
- Bench Seats Inside
Engine, Coal Car, and Caboose
- Shown with Poly Lumber



Open Area Needed: 4'w x 29'l x 6'h

6 PIECE TRAIN SET (MULTICOLOR)

#1000

Open Area Needed:

Straight Layout - 4'w x 44'l x 6'h

Curved Layout - 39'w x 15'd, Open Area Needed: 45'w x 21'd



Features:

Each Piece is About
7'4"l x 46"w x 5'6"h

- Tracks
- Bell
- Steering Wheel
- Bench Seats

Inside

- Engine, Coal Car, Passenger Car, Dining Car and Caboose
- Multicolor Stain

6 PIECE TRAIN SET (NATURAL STAIN)

#1000

Open Area Needed:

Straight Layout - 4'w x 40'l x 6'h

Curved Layout - 39'w x 15'd, Open Area Needed: 45'w x 21'd



Features:

Each piece is about
7'4"l x 46"w x 5'6"h

- Tracks
- Bell
- Steering Wheel
- Bench Seats

Inside

- Engine, Coal Car, Passenger Car, Dining Car and Caboose
- Natural Stain

9 PIECE TRAIN SET

#1050

Open Area Needed: 26'd x 43'w x 6'h
Straight Layout - 4'w x 65'l
Curved Layout - 26'd x 43'w



Features:

Each piece is about
7'4"l x 46" w x 5'6" h

- Tracks
- Bell
- Steering Wheel
- Bench Seats

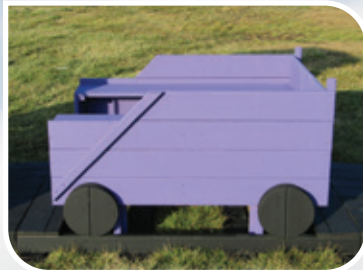
Inside

Engine, Coal Car, Passenger Car,
Tanker Car, Grain Hopper, Box Car,
Flat Car w/Bulldozer, Dining Car and
Caboose

- Multicolor Stain

BUILD YOUR OWN TRAIN SET

Choose The Cars You Want



Coal Car: Purple, Black



Tanker Car: Yellow, Black



Box Car: Taos, Taupe, Black



Dining Car: Big Country Blue, Black



Engine: Red, Black



Inside Coal Car



Inside Tanker Car



Inside Box Car



Inside Dining Car



Inside Engine



Passenger Car: Green, Black



Grain Hopper: Gray, Black



Flat Car w/Bulldozer: Cat Yellow, Black



Caboose: Red, Black



Inside Passenger Car



Inside Grain Hopper Car



Inside Flat Car w/Bulldozer



Inside Caboose

TRAIN SETS IN POLY MATERIAL



Poly Colors: Bright Red, Dark Green, Black



Poly Colors: Royal Blue, Bright Red, Black

SMALL SEMI TRUCK

#1130

Open Area Recommended: 16'd x 16'w x 9'h



Features:

- Semi 10'l x 4'w 8 ½'h
- 2 Steering Wheels
- Mirrors
- Smokestacks
- 2 Seats
- 1 Slide
- Customizations: No Slides, Different Colors

Stain: Pewter Gray Cab, Gray, Black



TRUCK DAY CAB

#1760

Open Area Recommended: 10'd x 21'w x 8'h



Features:

- Truck 14 ½'l x 51" w x 8'h
- 42 Square Feet of Play Deck
- 2-Steering Wheels
- Customizations:
Different Color Stains, Swing Beam

Stain: Big Country Blue, Black, Gray



TRUCK CAB WITH SLEEPER

#1770

Open Area Recommended: 22'd x 31'w x 10'h



Features:

- Truck 14 ½'l x 51" w x 8'h
- 42 Square Feet of Play Deck
- 10' Wave Slide
- Steering Wheels
- 3 Position Swing Beam
- 2 Belts
- 1 Double Glider

Customizations: Slides, Different Color Stains

Stain: Yellow, Black, Gray



SMALL SEMI WITH 1120 TANK TRAILER

#1130 & #1120

Open Area Recommended: 16'd x 29'w x 9'h



Features:

- Semi with Trailer 24'l x 4'w 8 ½'h
- 2 Steering Wheels
- Mirrors
- Smokestacks
- 2 Seats
- 3 Slides
- Customizations: No Slides, Different Colors

Stain: Pewter Gray Cab, Gray Trailer



Inside Trailer



Back End

SMALL SEMI WITH 1110 BOX TRAILER

#1130 & #1110

Open Area Recommended: 16'd x 29'w x 9'h



Features:

- Semi with Trailer 24'l x 4'w 8 ½'h
- 2 Steering Wheels
- Mirrors
- Smokestacks
- 2 Seats
- 4 Slides
- Customizations: No Slides, Different Colors



CONVERTIBLE POLY

#3400

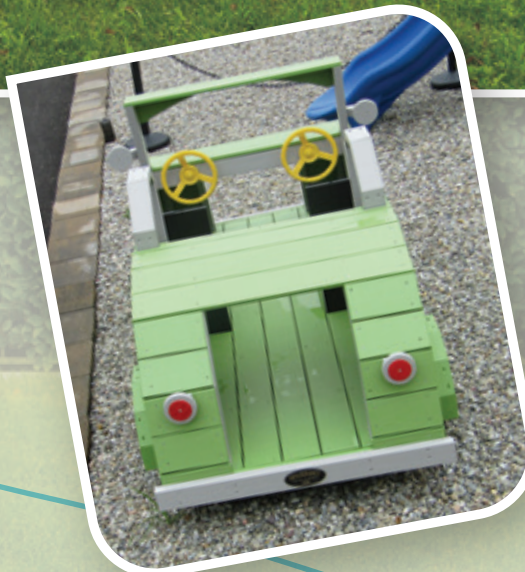
Open Area Recommended: 10'd x 12'w x 8'h



Features:

- Convertible 4'w x 9 ½'l x 4'h
- Steering Wheel
- 2 Seats
- Customizations: Different Color Poly

Poly Colors: Lime Green,
Dove Gray, Black



TUG BOAT

#5100

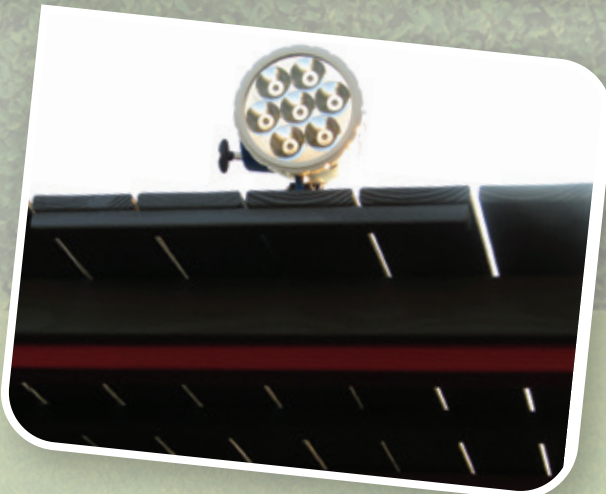
Open Area Recommended: 19'd x 34'w x 9'h



Features:

- Tug Boat 13'L x 8 ½'w x 9'H,
- 70 Square Feet of Play Deck
- Tunnel Through The Pilot House to Access The Point:
- 27" h X 20" w X 40" l
- 1-10' Wave Slide
- 3 Position Swing Beam
- 2 Belts
- 1 Double Glider
- Captain's Wheel
- Gangplank
- Spotlight
- Bell
- Customizations: Slides, Different Color Stains and Swings

Stain: Red, Pewter Gray



SMALL CAMPER

#2550

Open Area Recommended: 30'd x 18'w x 11'h with slide



Features:

- Camper 4'w x 11 ½'l x 8'h
- 29 Square Feet of Play Deck
- 10' Wave Slide
- Customizations: Slides, Different Color Stains

Stain: Pink, Gray



Aerial Photo



Inside Photo

BIG CAMPER

#2500

Open Area Recommended: 15'd x 21'w x 10'h



Hitch and Tank

Features:

- Camper 8'w x 15'l x 10'h
- 135 Square Feet of Floor
- Inside Ladder to Access Luggage Rack on Top
- Customizations: Slides, Different Color Stains

Stain: Shadow Gray, Aqua

Shown with Optional Porch, Chairs, Table and Fire Pit



Stain colors: white, pink and aqua

BIG BARN AND SILO

#8000

Open Area Recommended: 50'd x 47'w x 22'h



Features:

- Barn 14'w x 24'l x 22'h (with Cupola)
- Silo 8'w x 8'l x 19'h
- 736 Square Feet of Floor (Approx.)
- Inside Ramps and Walkways to Slides
- 5-14' Avalanche Slides
- 2-10' Avalanche Slides
- 1-9' Turbo Slide
- 2-7' Turbo Slides
- 2-3' 3" Crawl Tunnel with Clear Section
- 1-Bubble Panel
- Customizations: Slides, Different Color Stains

Stain: Red, White, Gray, Black
Asphalt Shingles



HELICOPTER

#1600

Open Area Needed: 16'w x 19'l x 11'6"h

Features:

- Helicopter 10'w x 19'l x 11'6'h
- 5' Deck Height
- 2 Belt Swings
- Tire Swing
- 2 Steering Wheels
- 2 Seats
- 10' Wave Slide
- 5' Rock Wall
- 5' Entry Ladder
- Spotlight
- Mesh Tarp Over Cockpit
- 53" Clearance Inside
- Multi Color Stain



Mesh Cockpit Cover Included



Spot Light

SWING SET OPTIONS

Choose your accessories and colors



Buoy Ball



Belt Swing



Glider



Tic-tac-toe



Binoculars



Steering Wheel



Ship's Wheel



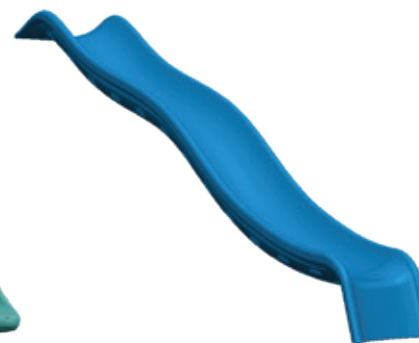
7', 6', 5' Spiral Slide



7', 6', 5' Turbo Twister



14', 10', 6' Avalanche Slide



10' Wave Slide



Megaphone



Telescope



Spotlight



Actual products may vary from pictures

SWING SET OPTIONS

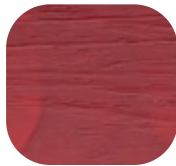
Stain Colors



Caterpillar Yellow



Natural Toner



Fire Engine Red



Dark Green



Big Country Blue



Dark Blue



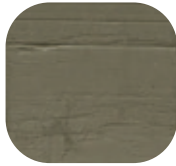
Stonehedge Gray



Beechwood Gray



Sage



Army Green



Semi Transparent
Rustic Cedar



Butternut

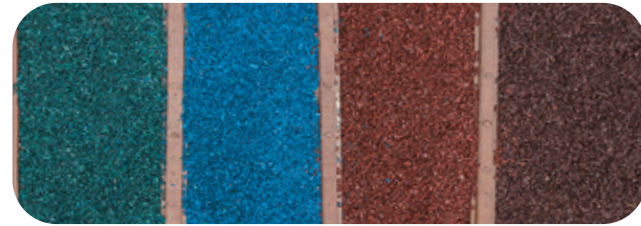


Manor Brown



Black

Mulch Colors



Green

Blue

Red

Brown

Adult supervision is recommended anytime children are playing on swing sets. For added safety we recommend a 6' perimeter around your entire set.

The manufacturer reserves the right to change or modify swing sets and accessories without notice, to further enhance child safety and enjoyment.

We recommend checking bolts, lags and other fasteners periodically for tightness.

All products can be finished with water sealer.

Actual color may vary from print color

PLAYSETS

SWING SETS & PLAYHOUSES



400 (PG.13)



500 (PG.14)



600 (PG.10)



700 (PG. 10)



800 (PG. 10)



900 (PG. 26)



910 (PG. 26)



1000 (PG. 27)



1050 (PG. 28)



1110 (PG. 35)



1120 (PG. 34)



1130 (PG. 31)



1200 (PG. 16)



1250 (PG. 17)



1500 (PG.12)



1500 (PG. 11)



1600 (PG. 41)



1700 (PG. 20)



1750 (PG. 21)



1760 (PG. 32)



1770 (PG. 33)



1800 (PG. 24)



1850 (PG. 23)



1900 (PG. 22)



2100 (PG. 3)



2200 (PG. 4)



2500 (PG. 39)



2550 (PG. 38)



2600 (PG. 25)



3000 (PG. 15)



3100 (PG. 19)



3200 (PG. 18)



D119 (PG. 9)



3300 (PG. 5)



3300 (PG. 6)



3400 (PG. 36)



5000 (PG. 7)



5200 (PG. 8)



5100 (PG. 37)



8000 (PG. 40)

